

Fermat-1 RM 200MD Log

Format: VISION Service RM Log

Vertical Scale: 1:200

Graphics File Created: 07-Jan-2009 18:17

PIP SUMMARY

Density Samples †

Neutron Samples †

‡ ARC Gamma Ray Samples

‡ ARC Resistivity Samples

Rate of Penetration, Averaged over Last
5ft (ROP5_RM)
200 (M/HR) 0

ARC Gamma Ray (GR_ARC)
0 (GAPI) 200

Vertical Hole Diameter (VERD)
6 (IN) 16

Horizontal Hole Diameter (HORD)
6 (IN) 16

ARC Phase-Shift Resistivity 40-in. at 2
MHz (P40H)
0.2 (OHMM) 200

ARC Phase-Shift Resistivity 34-in. at 2
MHz (P34H)
0.2 (OHMM) 200

ARC Phase-Shift Resistivity 28-in. at 2
MHz (P28H)
0.2 (OHMM) 200

ARC Phase-Shift Resistivity 22-in. at 2
MHz (P22H)
0.2 (OHMM) 200

Bulk Density Correction (DRHO)
-0.25 (G/C3) 0.25

Photoelectric Factor (PEF)
0 (----) 10

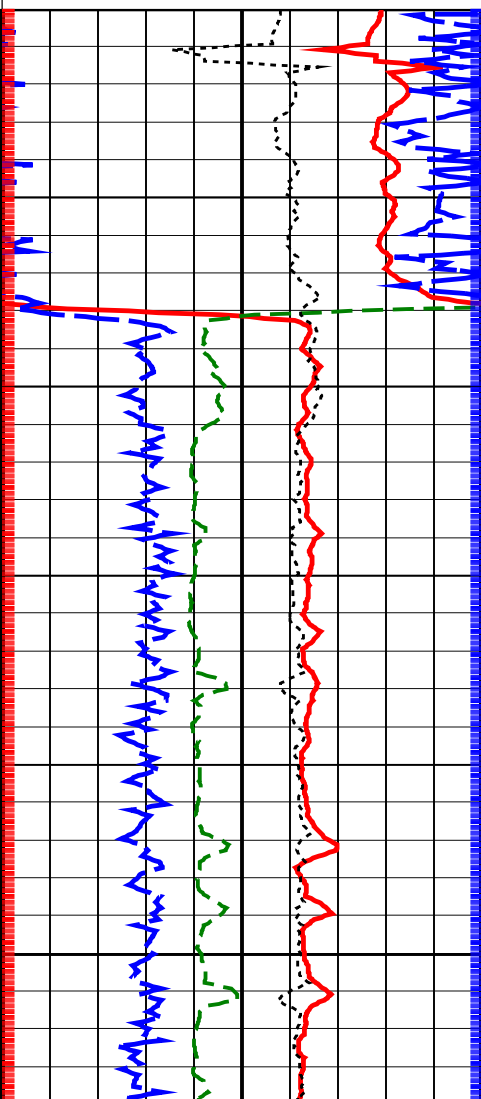
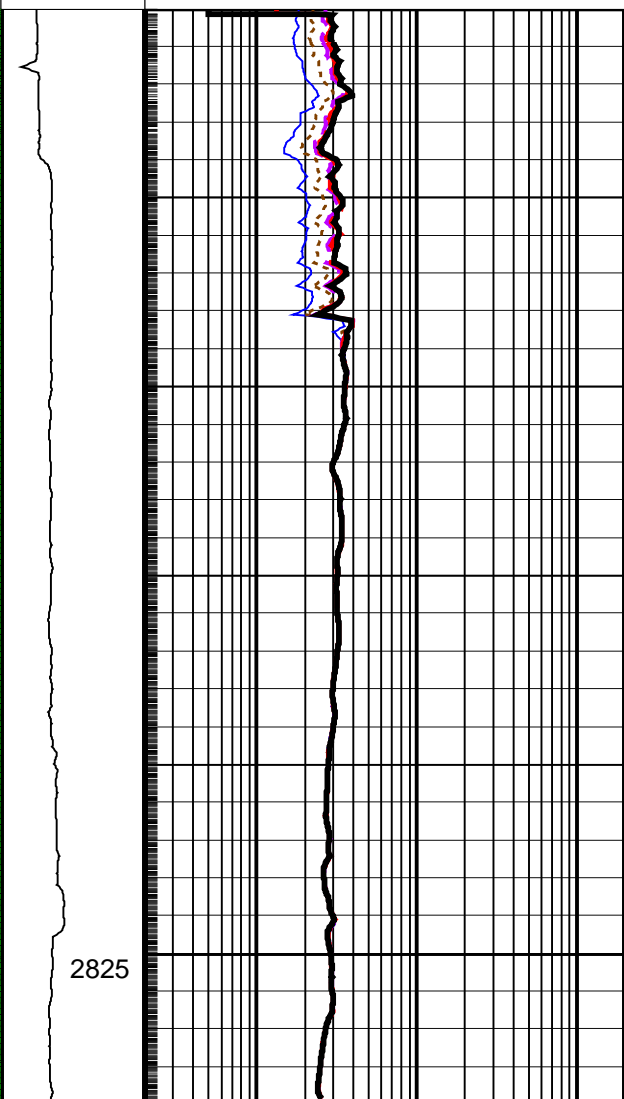
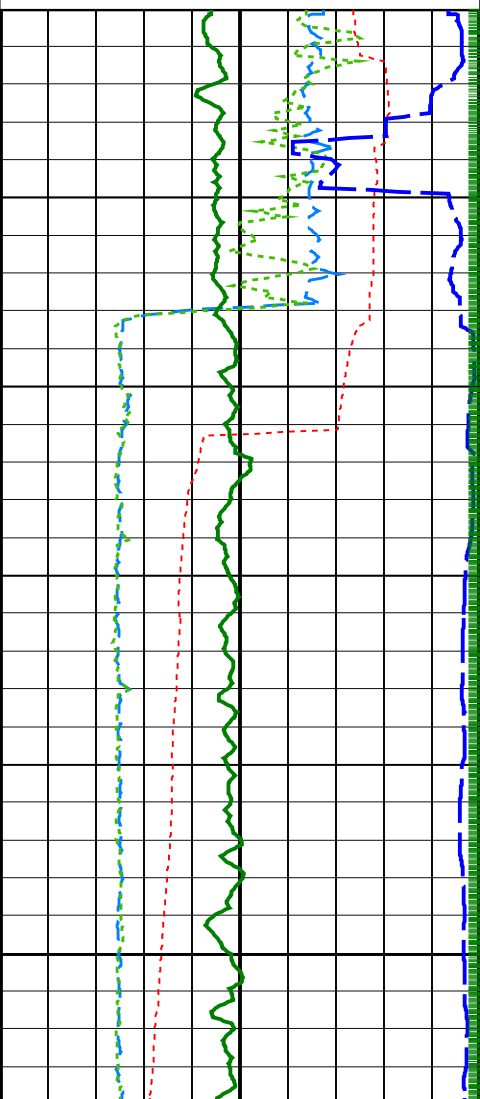
Thermal Neutron Porosity (TNPH)
45 (PU) -15

Density Time After Bit (TAB_DEN)
0 (HR) 10

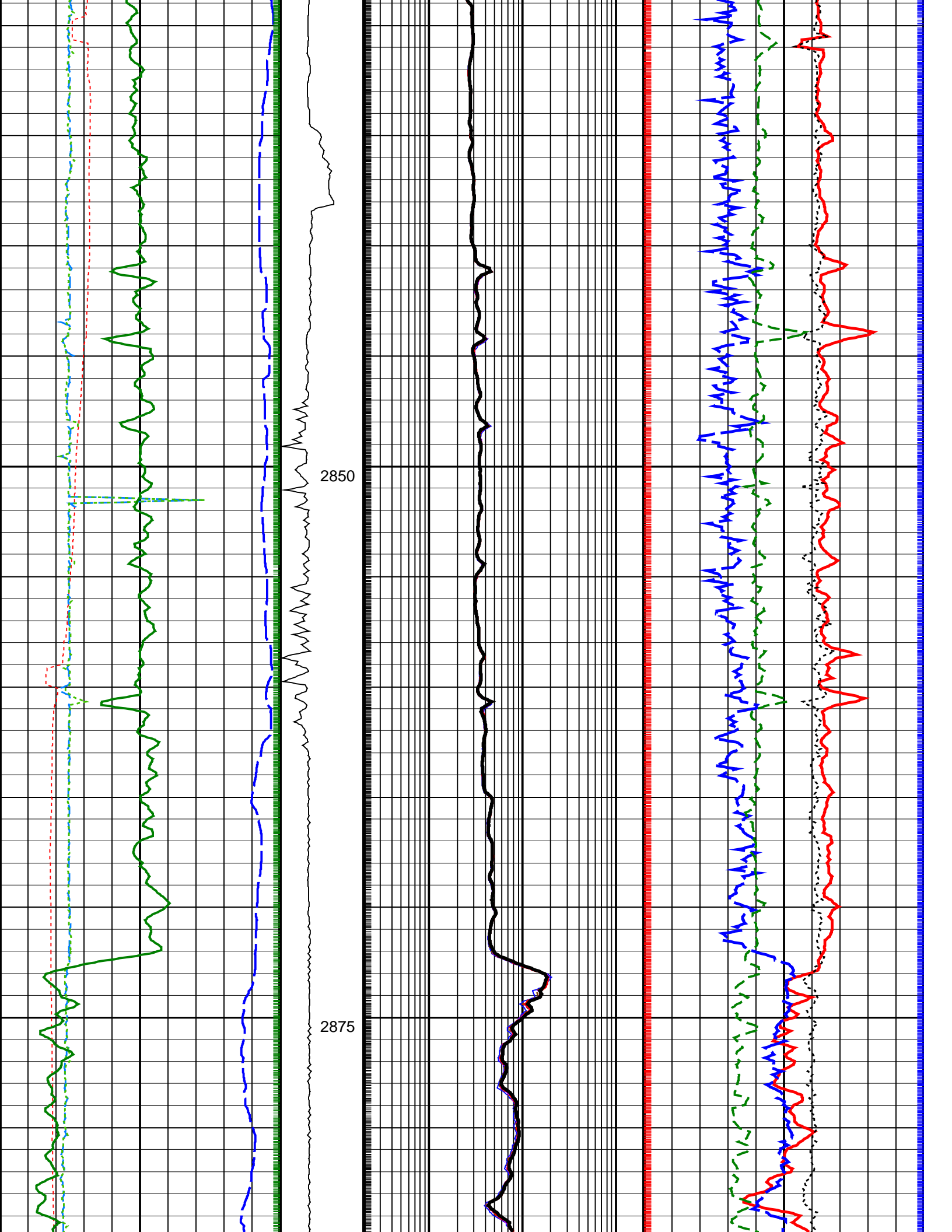
ADN
Rotational
Speed
(RPM_ADN)
(RPM)
0 250

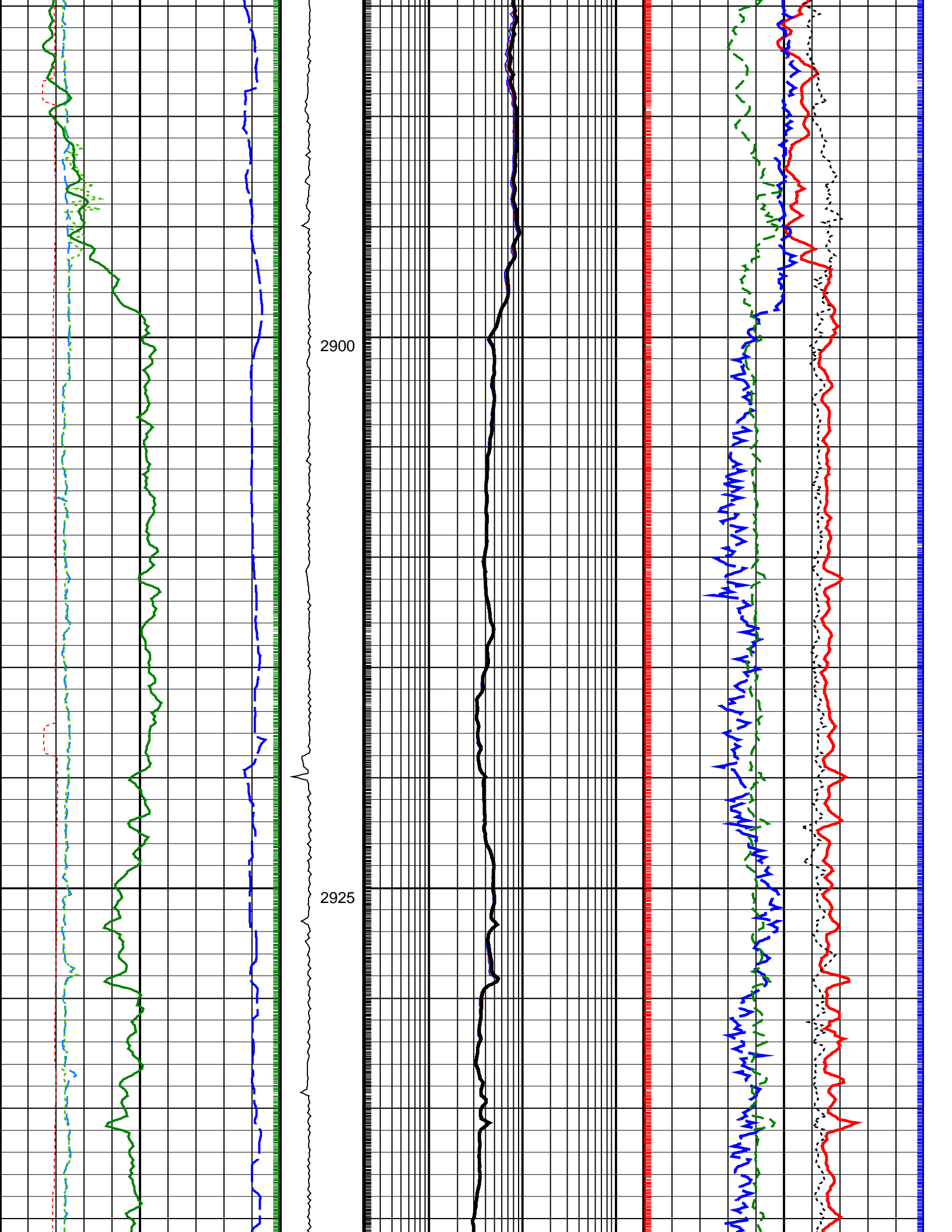
ARC Phase-Shift Resistivity 16-in. at 2
MHz (P16H)
0.2 (OHMM) 200

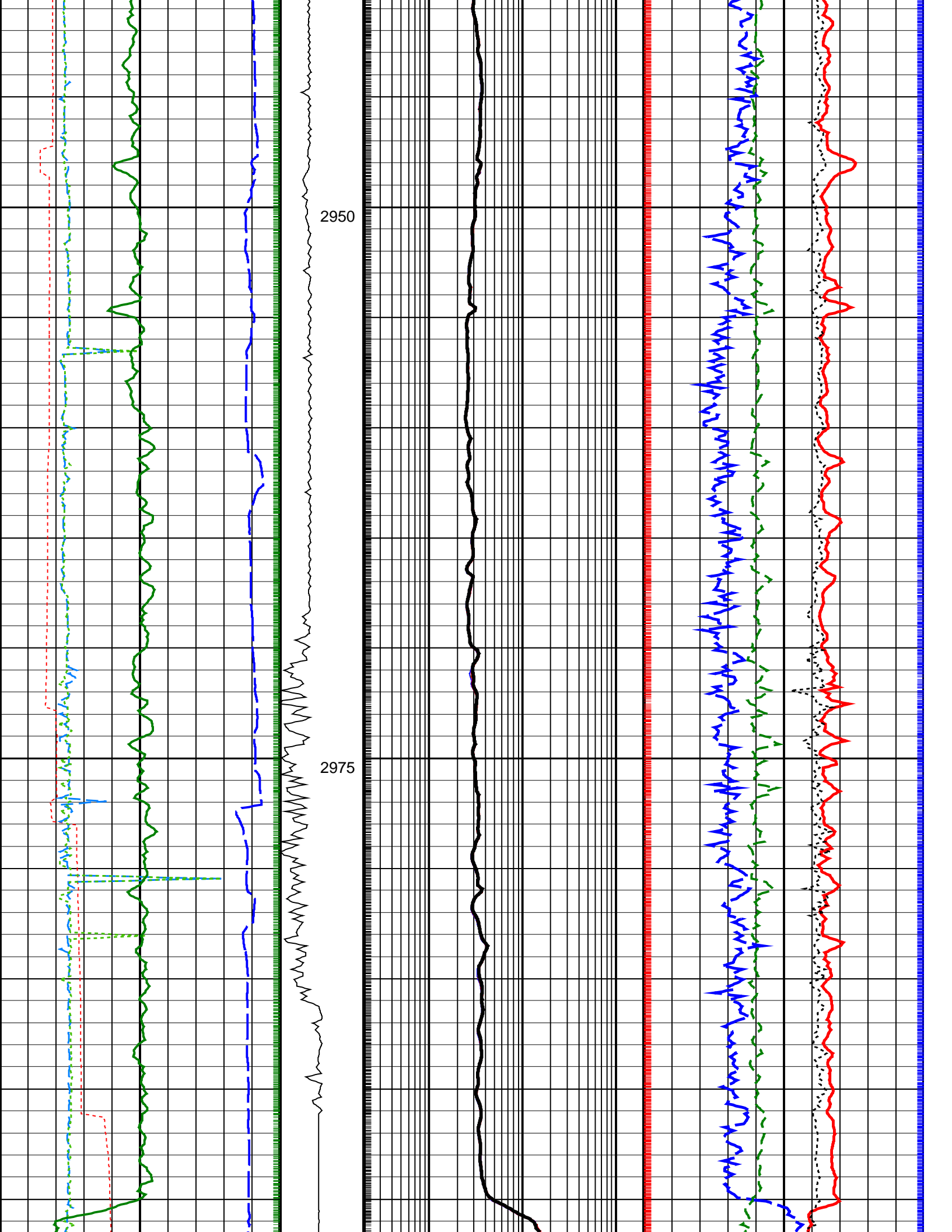
Bulk Density (RHOB)
1.95 (G/C3) 2.95

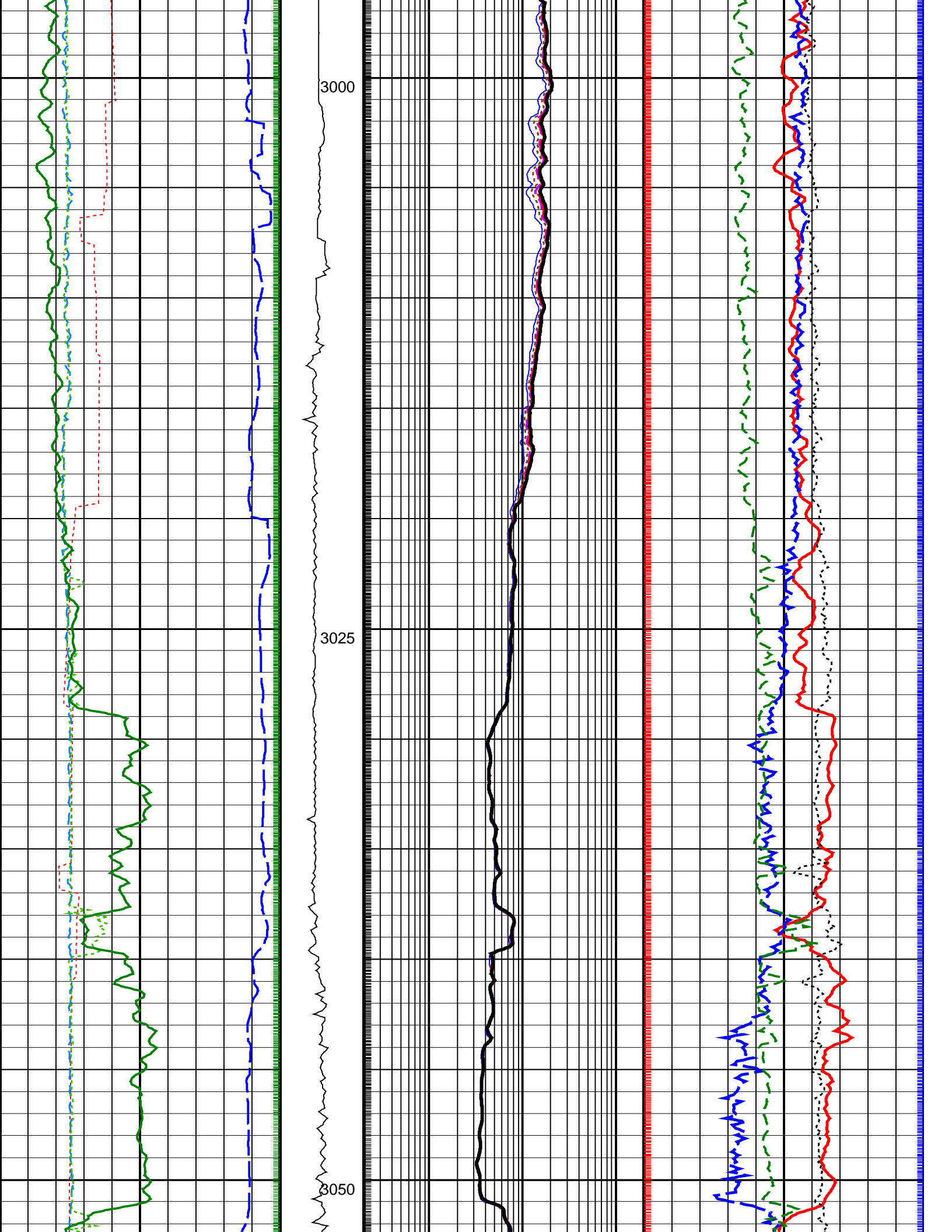


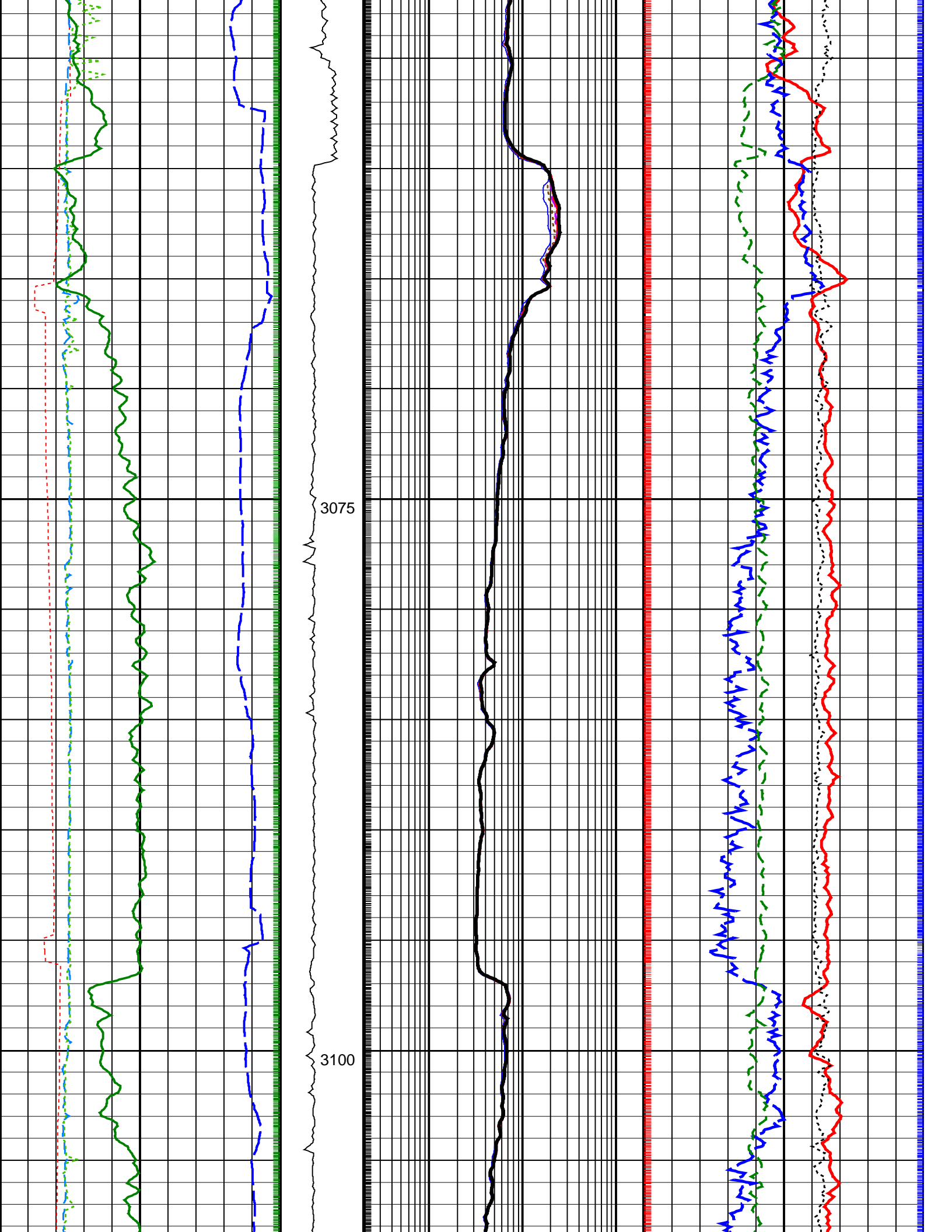
2825

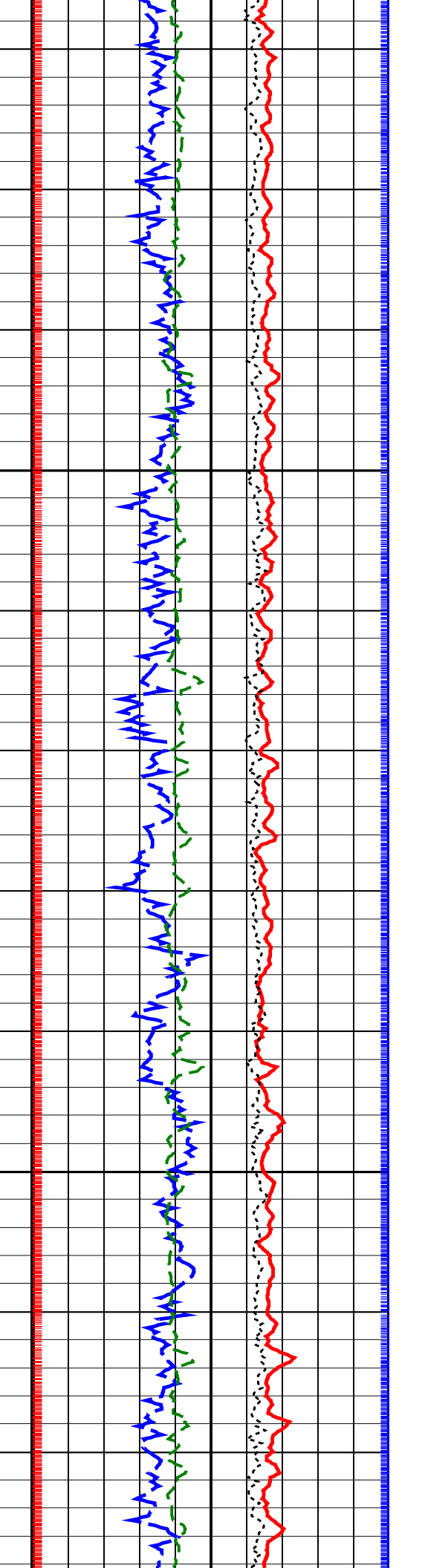
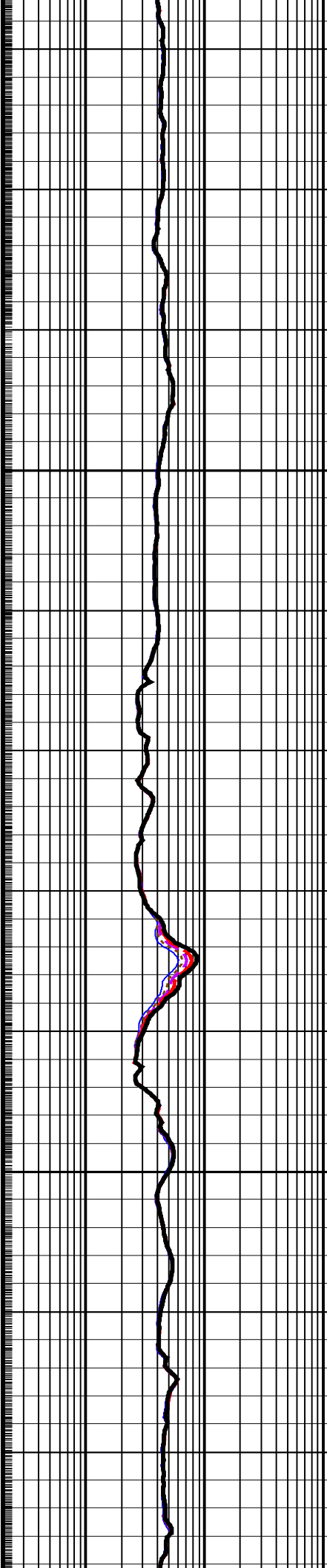
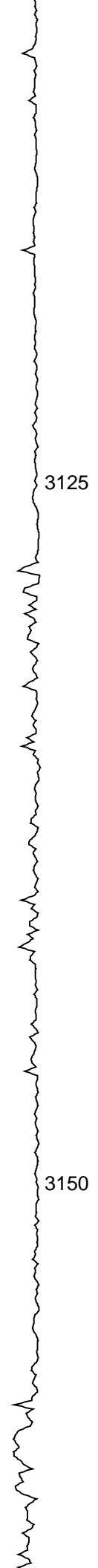
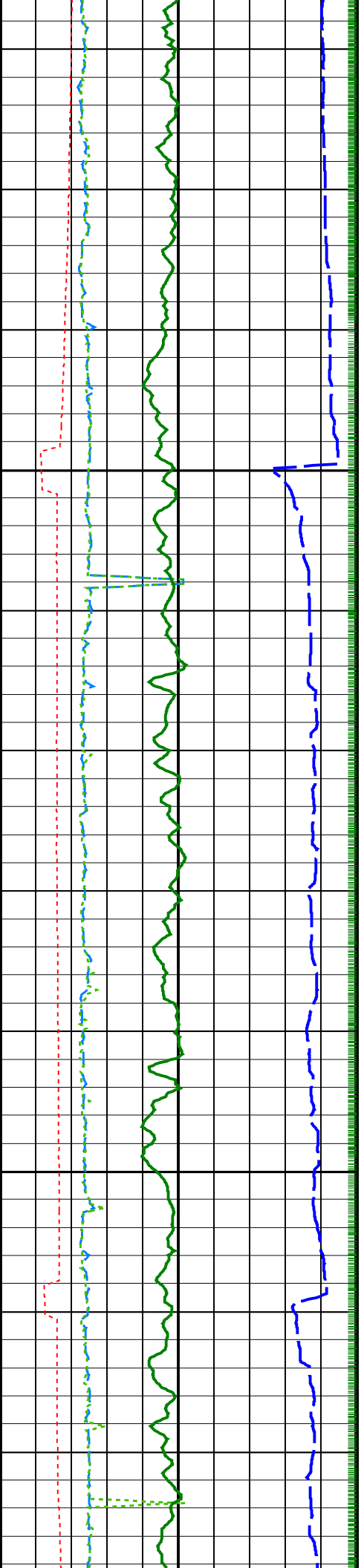


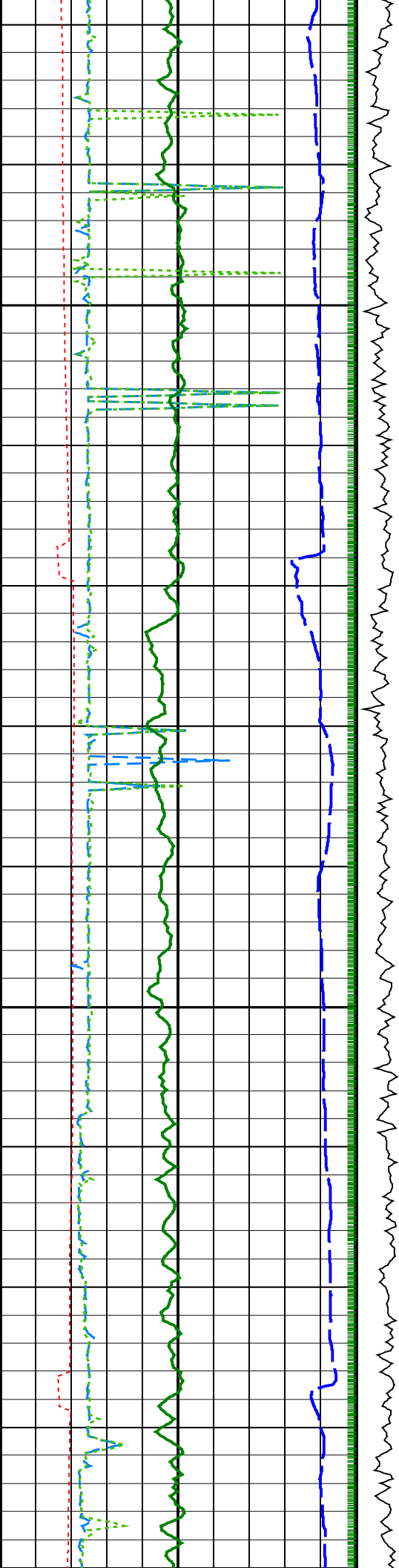






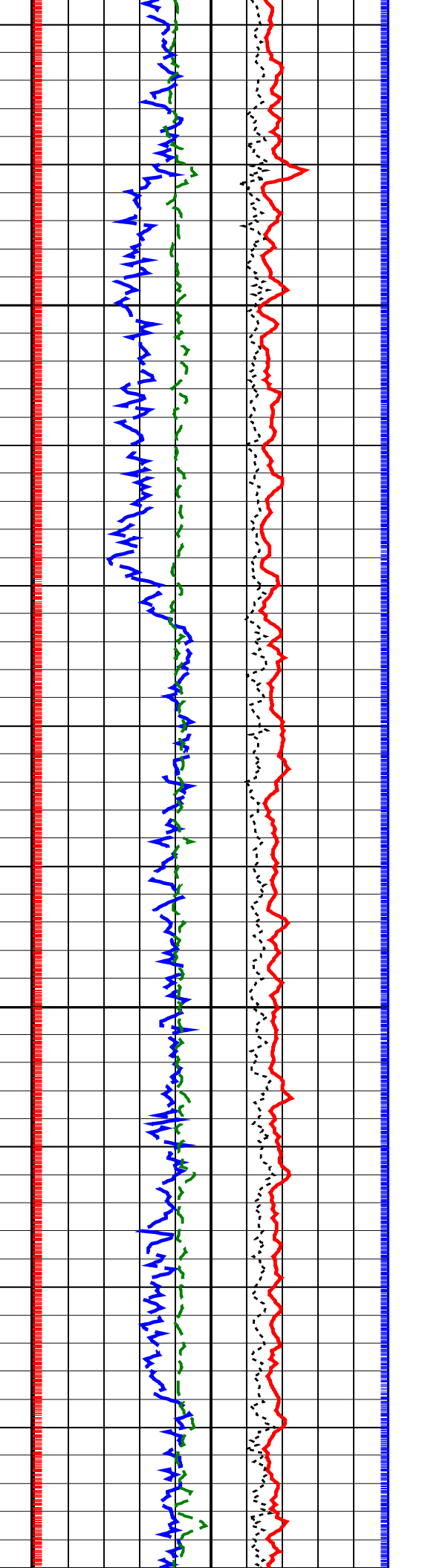
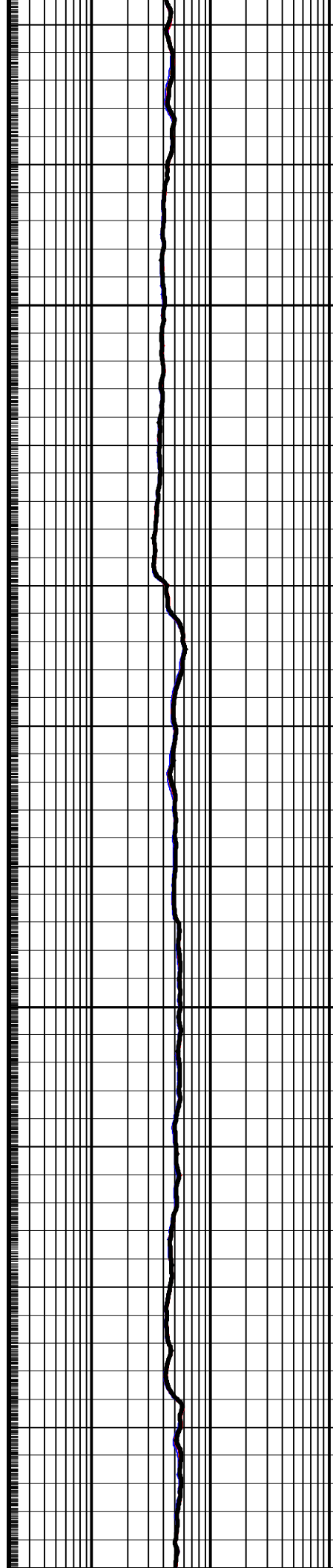


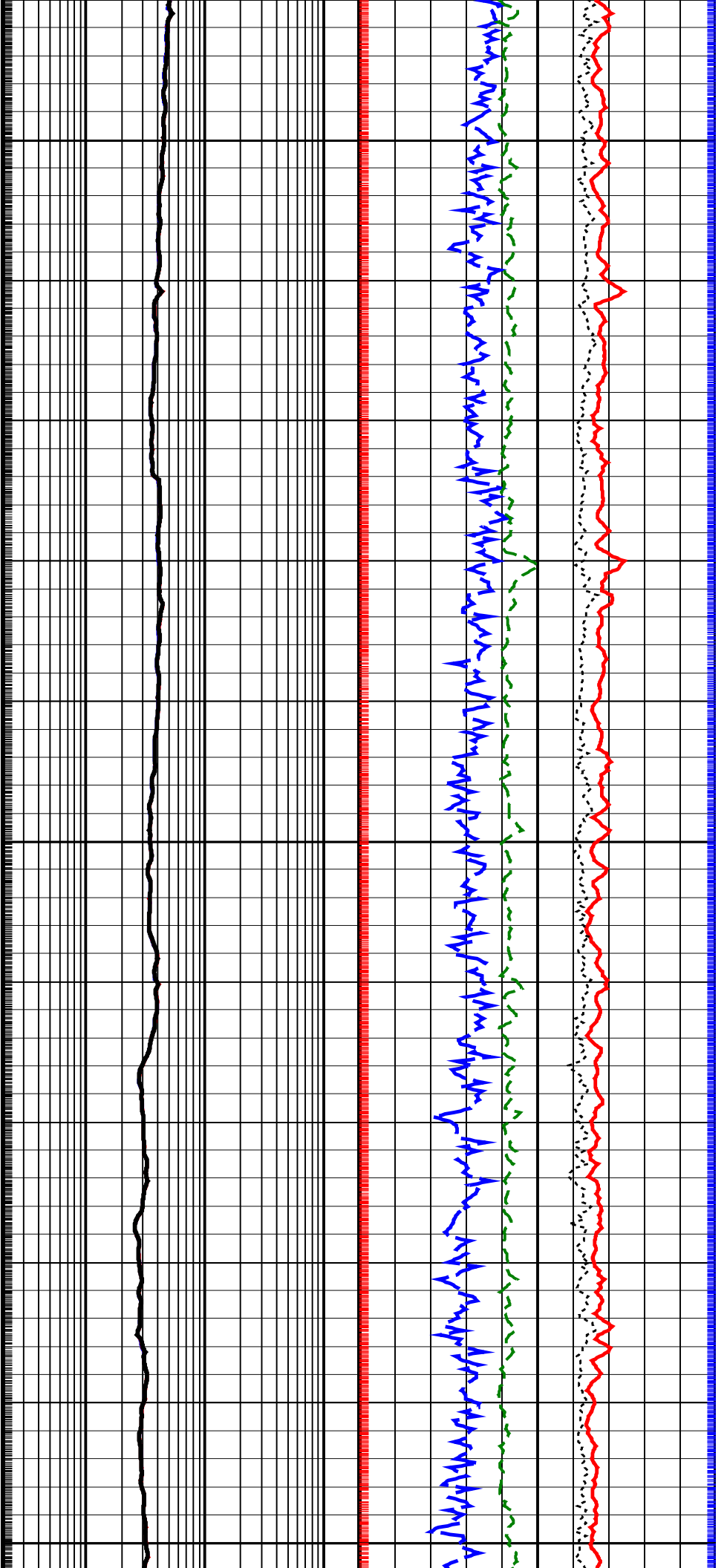
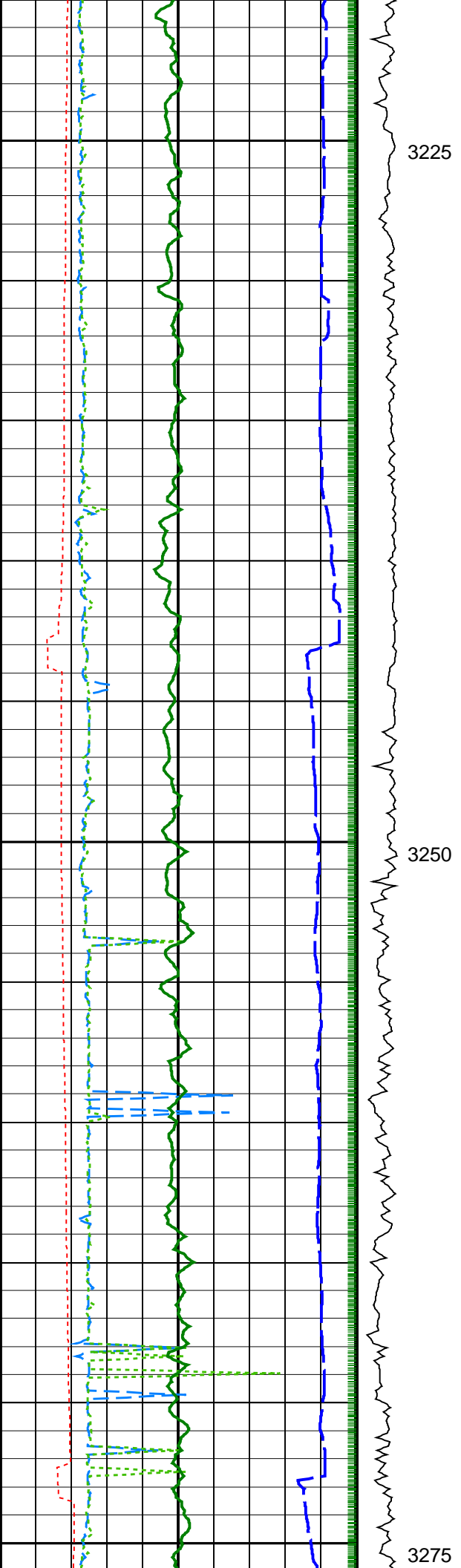


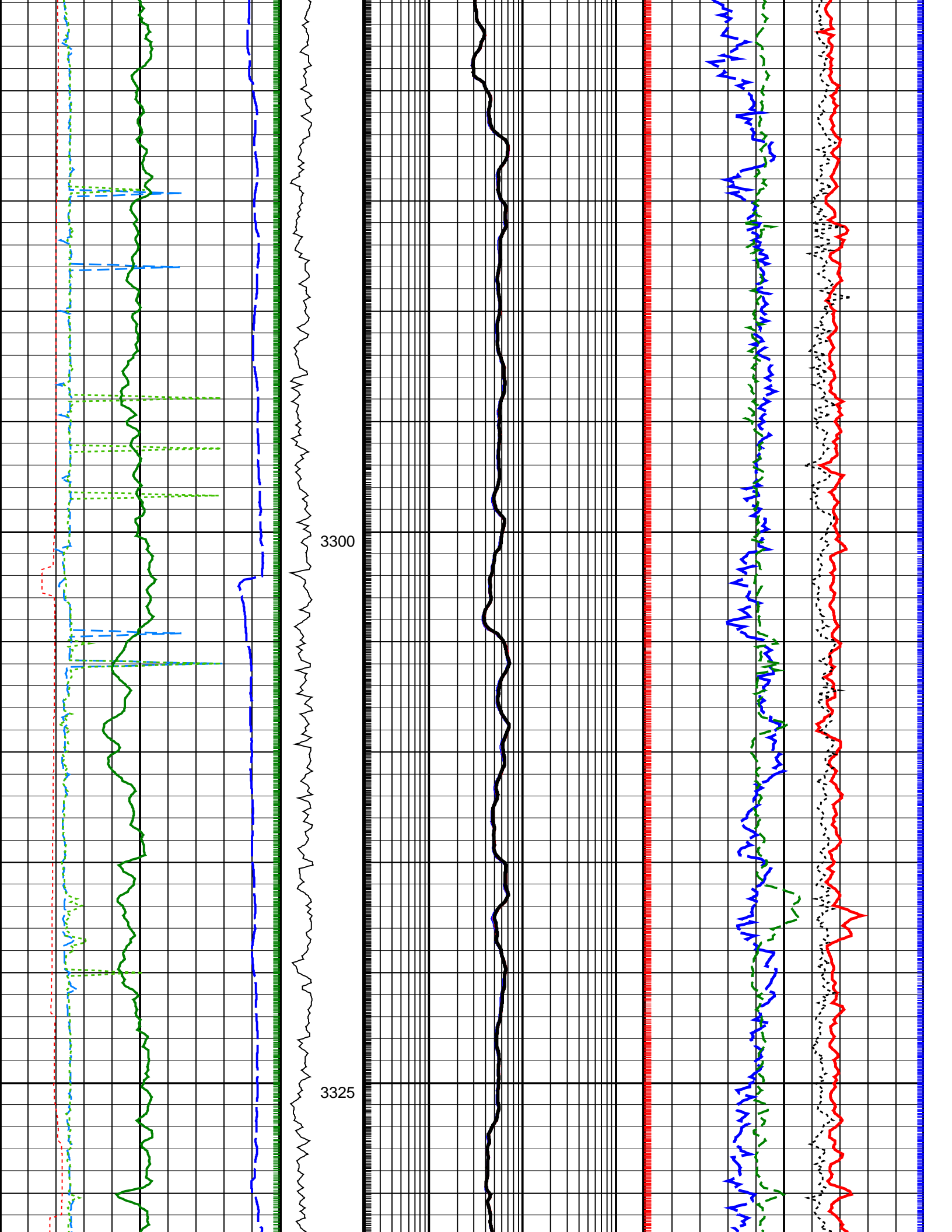


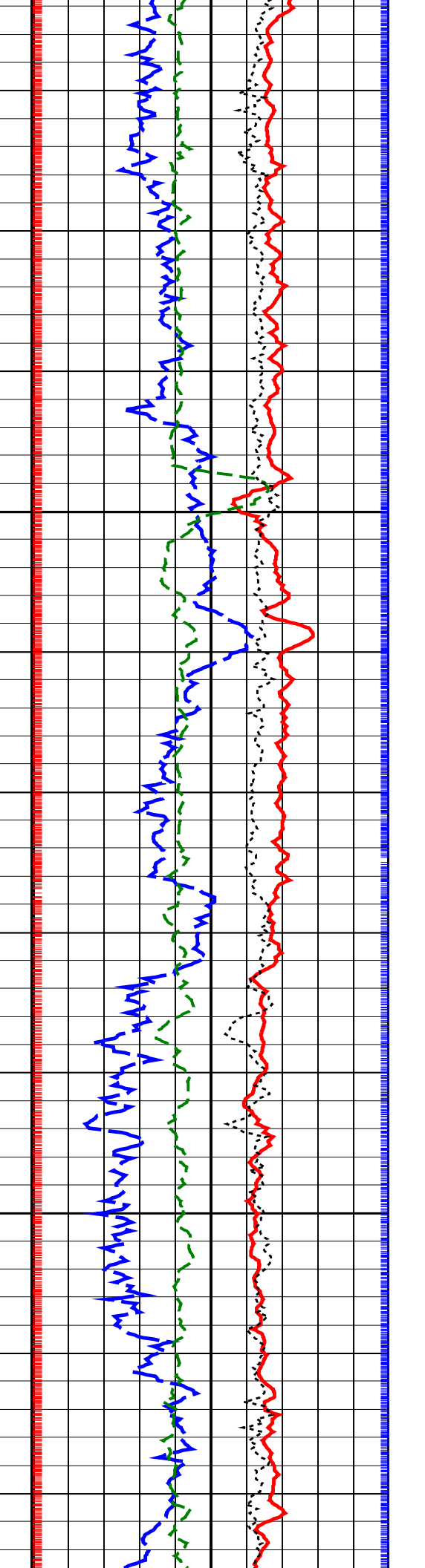
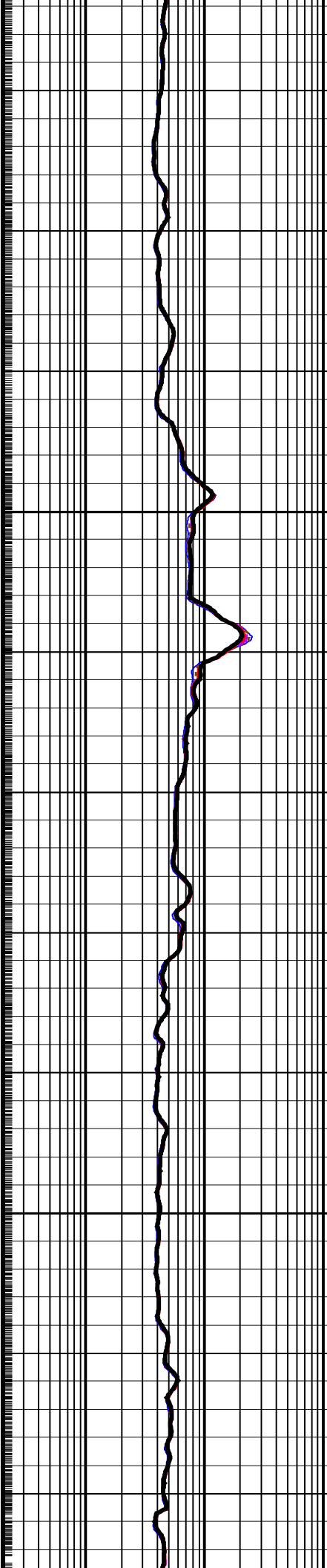
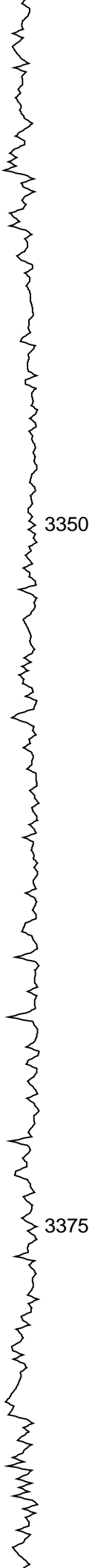
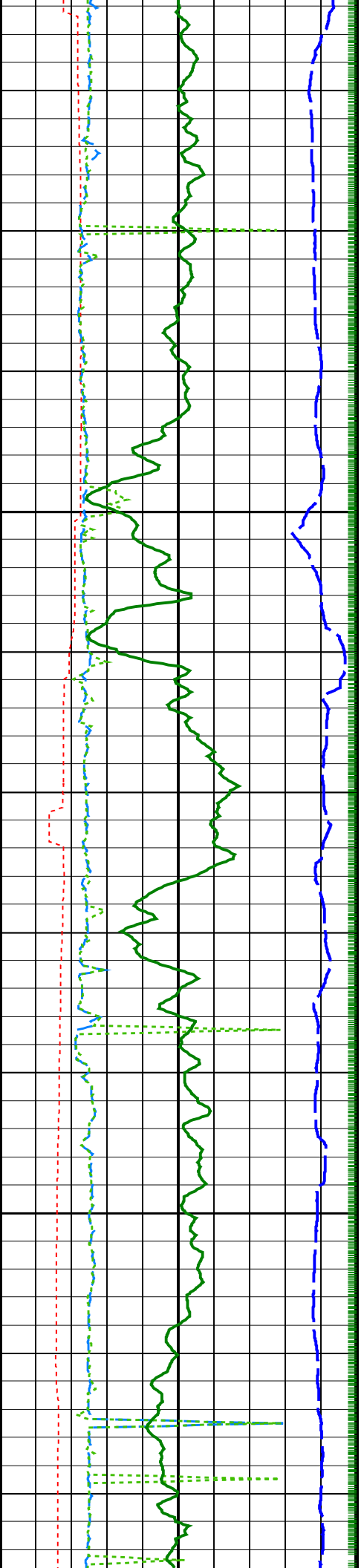
3175

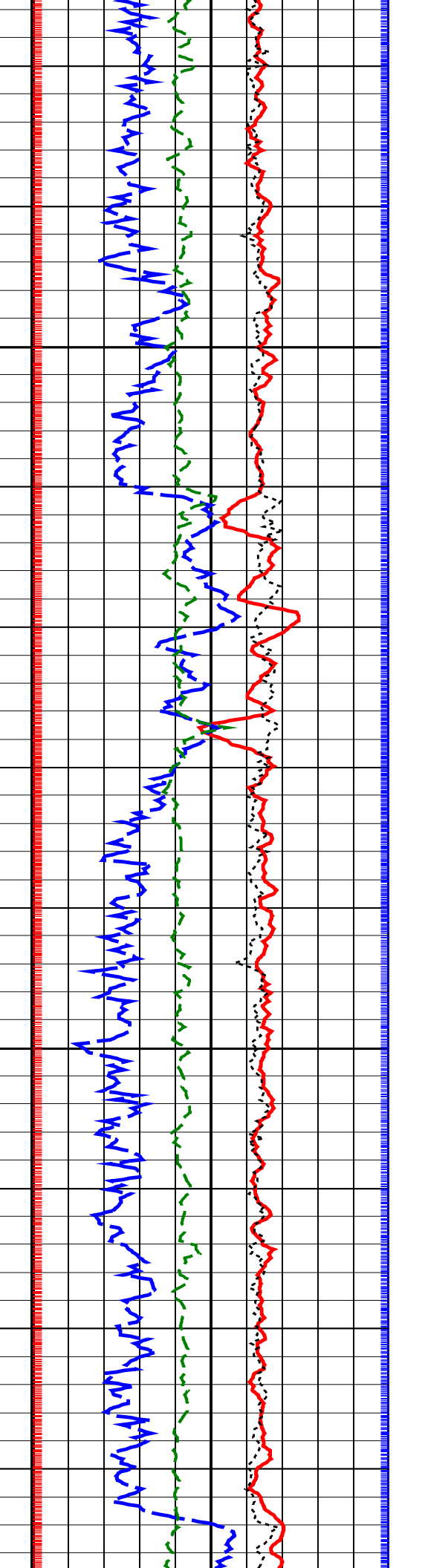
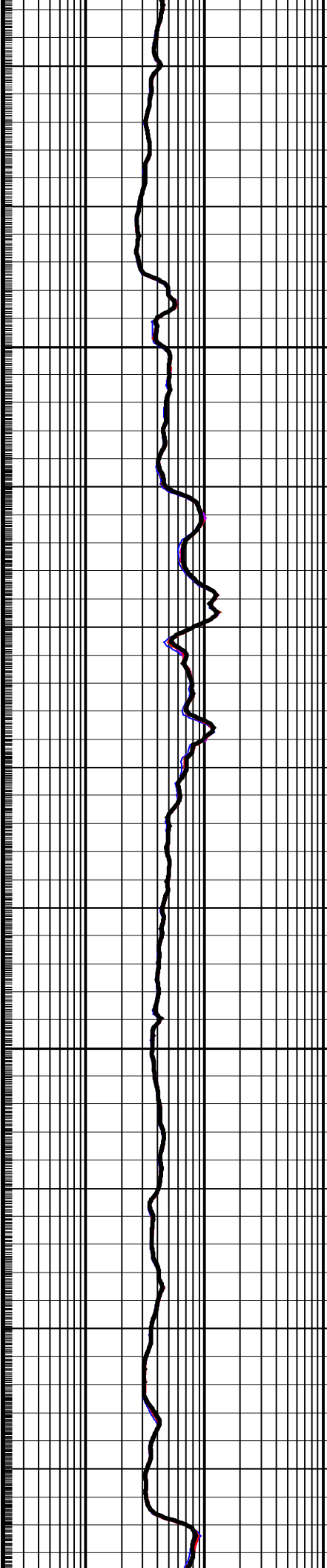
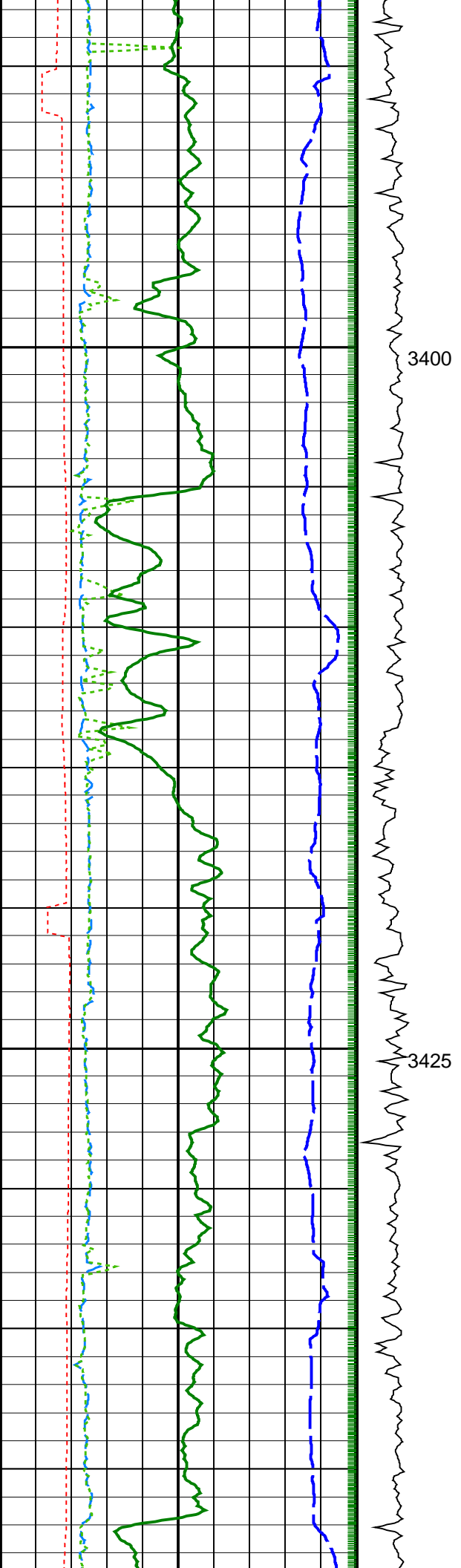
3200

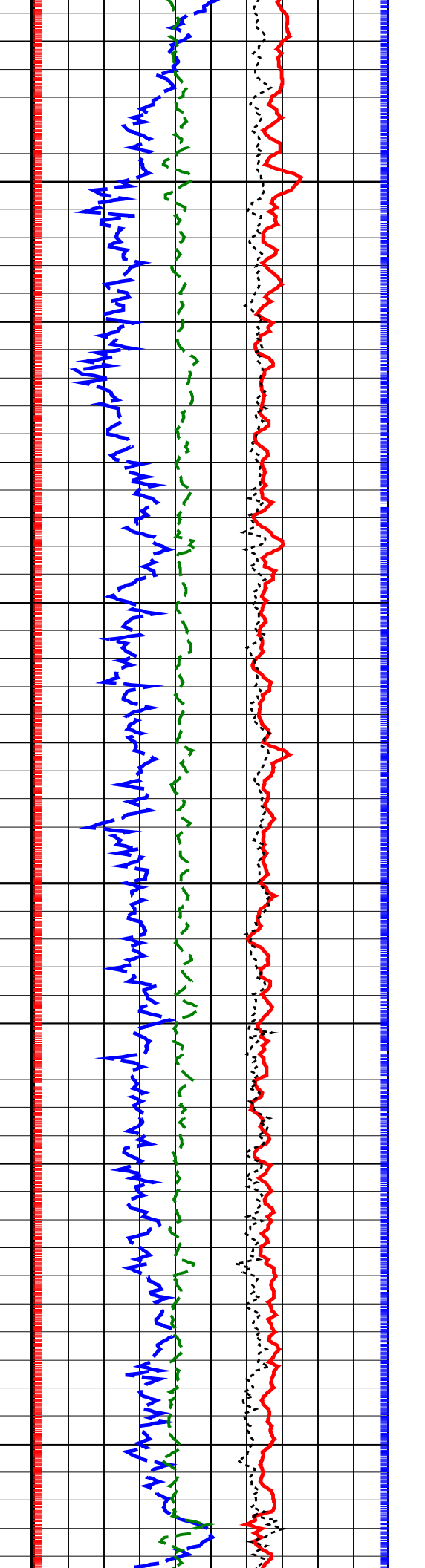
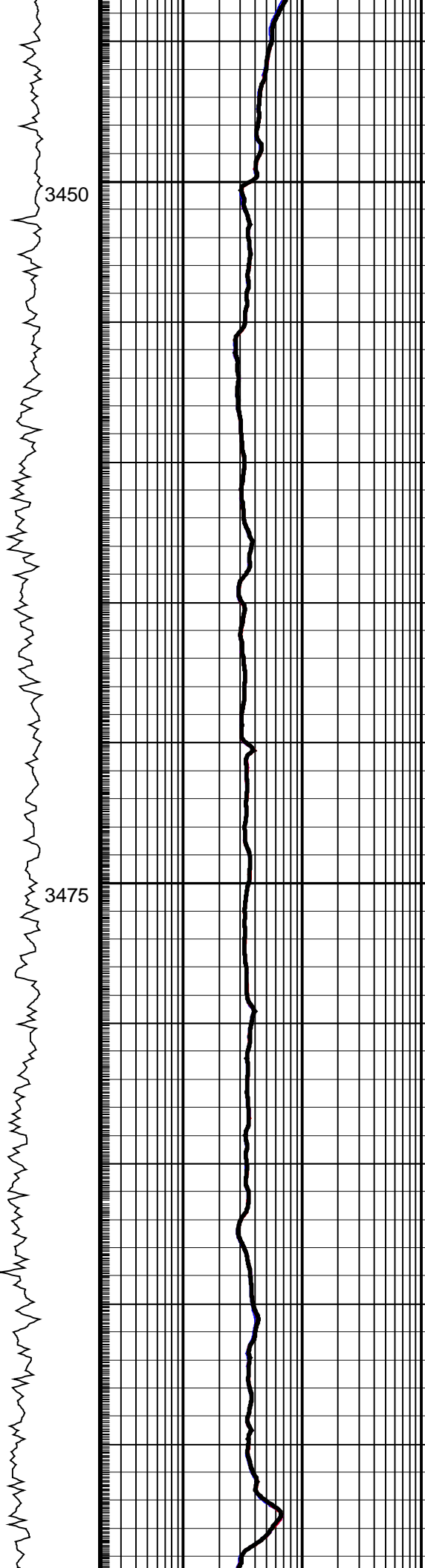
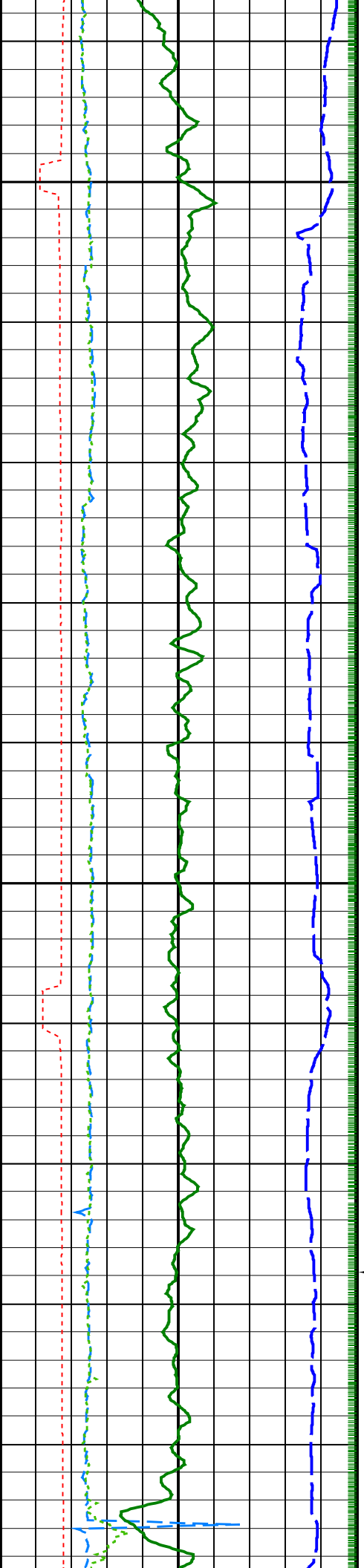






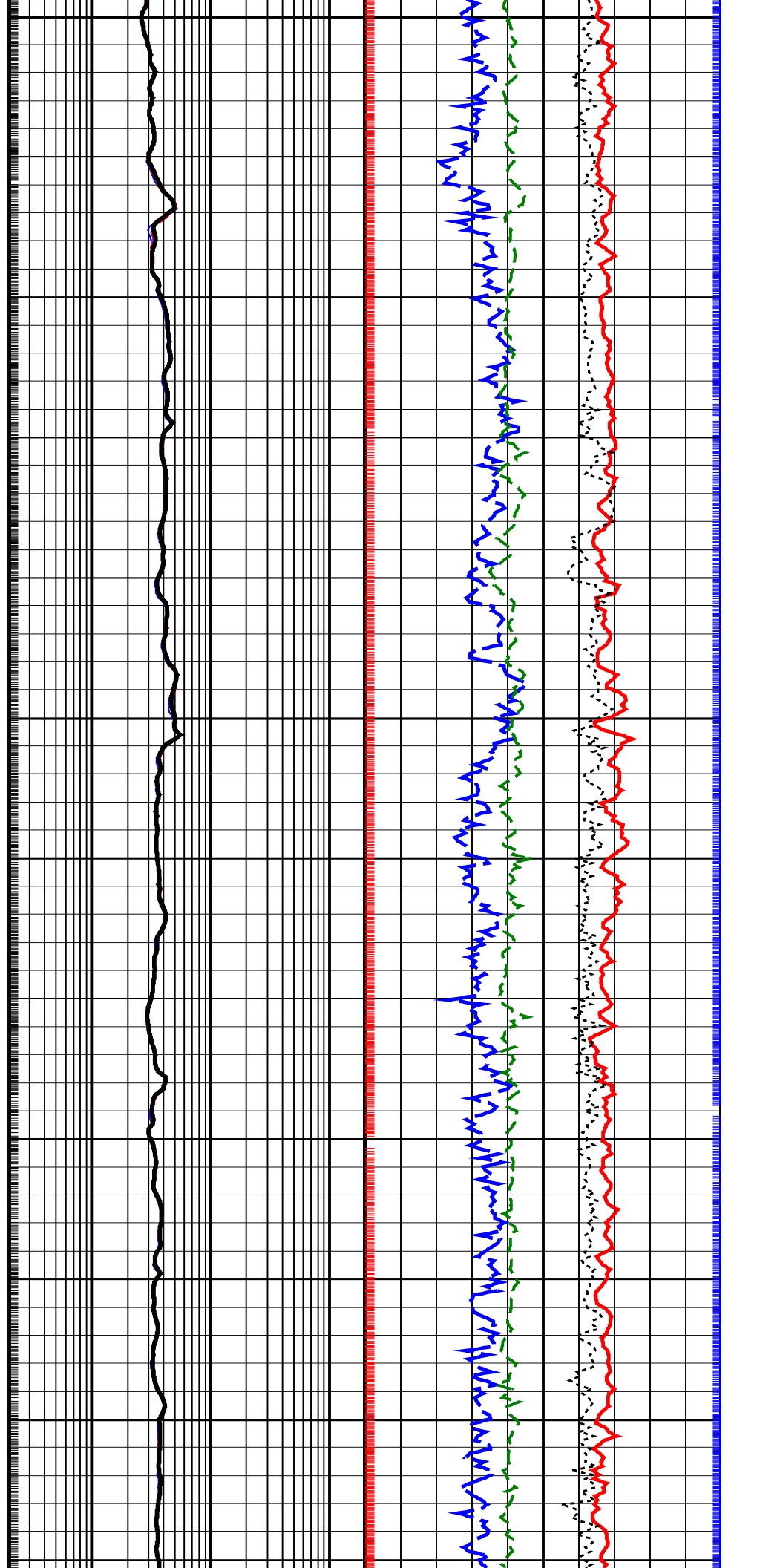
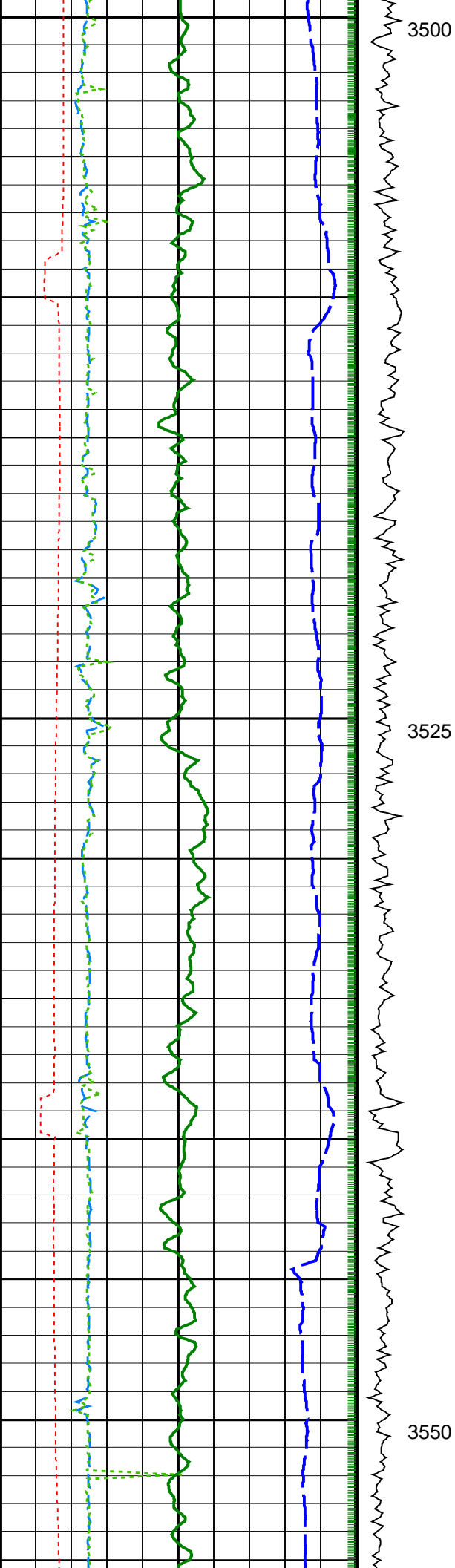


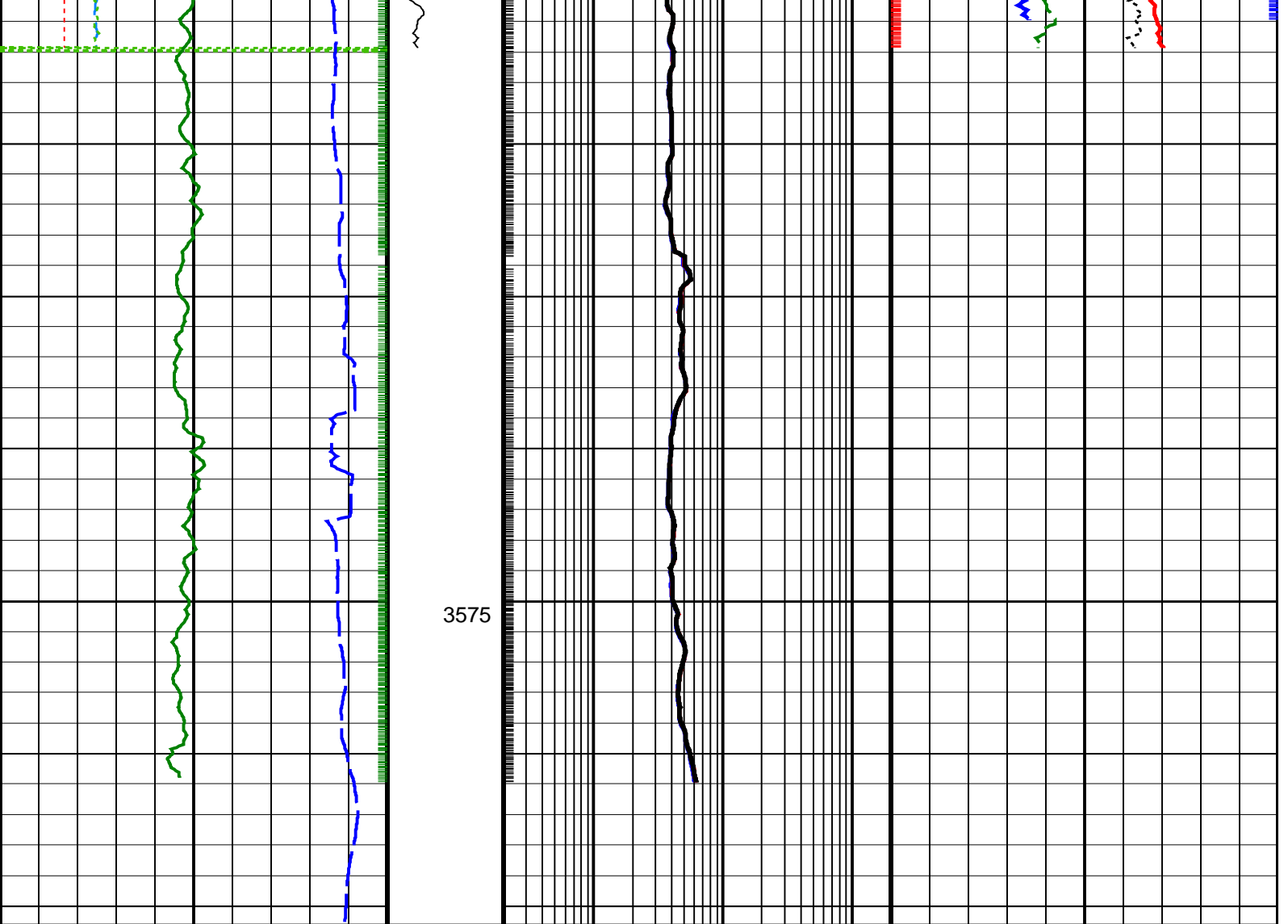




3450

3475





Density Time After Bit (TAB_DEN) (HR)	ADN Rotational Speed (RPM_ADN) (RPM)	ARC Phase-Shift Resistivity 16-in. at 2 MHz (P16H) (OHMM)	Bulk Density (RHOB) (G/C3)
0 10	0 250	0.2 200	1.95 2.95
Horizontal Hole Diameter (HORD) (IN)		ARC Phase-Shift Resistivity 22-in. at 2 MHz (P22H) (OHMM)	Thermal Neutron Porosity (TNPH) (PU)
6 16		0.2 200	45 -15
Vertical Hole Diameter (VERD) (IN)		ARC Phase-Shift Resistivity 28-in. at 2 MHz (P28H) (OHMM)	Photoelectric Factor (PEF) (----)
6 16		0.2 200	0 10
ARC Gamma Ray (GR_ARC) (GAPI)		ARC Phase-Shift Resistivity 34-in. at 2 MHz (P34H) (OHMM)	Bulk Density Correction (DRHO) (G/C3)
0 200		0.2 200	-0.25 0.25
Rate of Penetration, Averaged over Last 5ft (ROP5_RM) (M/HR)		ARC Phase-Shift Resistivity 40-in. at 2 MHz (P40H) (OHMM)	
200 0		0.2 200	

PIP SUMMARY

Density Samples †

Neutron Samples †

‡ ARC Gamma Ray Samples

† ARC Resistivity Samples

